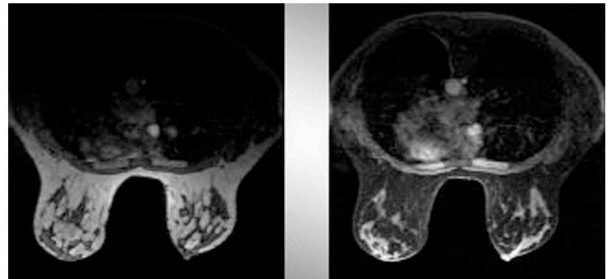


# 1.5T Breast Imaging Coil for Siemens 1.5T scanners

The InsightMRI Breast Coil, with its 4-channel, phased array coil architecture, provides high quality imaging of the breast, chest wall and axillary tissue. The breast coil is also optimized for parallel imaging and supports both bilateral and unilateral imaging.



Axial Gradient Echo Image with and without Fat Saturation

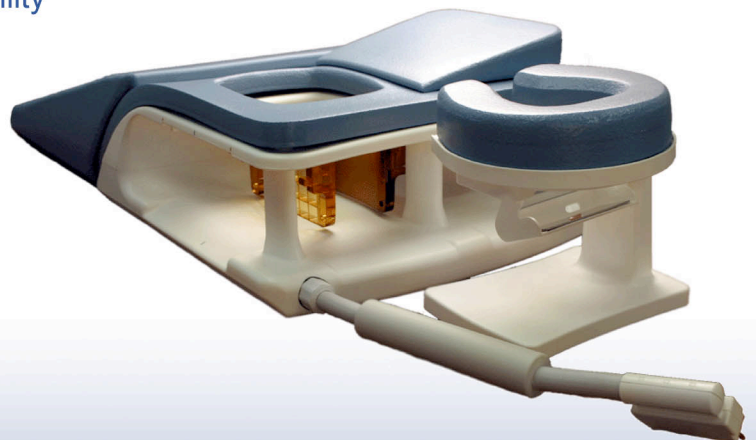
## Advantages:

### Superior Imaging Electronics:

- 4 channel phased receive array for parallel imaging
- FDA approved for compatibility with Siemens 1.5T scanners
- Siemens approved for plug and play compatibility
- Compatible with accelerated sequences with factors up to 3X

### Patient Comfort:

- Large patient apertures to accommodate larger patients and better clinical access
- Large field of view for imaging tissue in and around the breast
- Comfortable padded patient contact surfaces for patients of all size
- Head rest with viewing mirror provided for patient comfort



Call or email for more information

Made in the USA by:

**InsightMRI**

T. (303)722-1500  
(800)232-2948  
F. (303)722-1507  
info@broadwest.com  
www.broadwest.com



Innovative Mammography Solutions for 20 years

## Technical Specifications

### Scanning Region of Sensitivity

#### Outer Dimension:

20.5" L X 19" W X 7" H  
(52cm L X 48cm W X 18cm H)

**FOV:** 15.75" (40cm)

**Weight of main unit:** 19.2 lbs (8.7 kg)

**Overall cable length:** 23" (58 cm)

### Safety Statement regarding INSL MRI coils

INSL coils, when used in conjunction with well-established ACR prescribed diagnostic clinical procedures of MRI and Spectroscopy, pose no risk to patient or the imaging professional. They are designed to function properly with control and safety circuits of the MR scanner. All patient contact materials are non-latex and have been tested to withstand most common hospital cleaning solutions.

### Warranty & Repair Policy

Product is warranted to be free from defects in materials and workmanship for a period of three years from date of shipment.

*Please see the published warranty for details.*

### Regulatory & Patent References

Each device undergoes design, manufacture and testing in accordance with NEMA and IEC standards.

Please contact us for local dealers

T. (303)722-1500  
(800)232-2948  
F. (303)722-1507  
info@broadwest.com  
www.broadwest.com